

LAPORAN
PEKERJAAN PENGADAAN JASA PEMELIHARAAN
PERAPIHAN KABEL UTP DAN LABELING
KOMISI PENYIARAN INDONESIA PUSAT
TAHUN 2025

Berdasarkan

SPK Nomor : 17/SETKPI.31/KU.01.01/SPK/02/2025
Tanggal : 24 Februari 2025



PELAKSANA



DEMATA AIRINDO, CV.

Office : Komplek Buana Soetta Blok G-33
Gedebage – Soekarno Hatta Bandung 40295
Phone : 081321294668 – (022) 87798513
E-mail : dematairindo@gmail.com



LAPORAN

PEKERJAAN PENGADAAN JASA PEMELIHARAAN PERAPIHAN KABEL UTP DAN LABELING KOMISI PENYIARAN INDONESIA PUSAT TAHUN 2025

KATA PENGANTAR

Puji syukur kehadiran Tuhan Yang Maha Esa, atas Rahmat dan KaruniaNya kegiatan Pekerjaan Pengadaan Jasa Pemeliharaan Perapihan Kabel UTP dan Labeling di lingkungan Komisi Penyiaran Indonesia (KPI) Pusat dapat diselesaikan dengan baik dan tepat waktu.

Laporan ini disusun sebagai bentuk pertanggungjawaban pelaksanaan kegiatan tersebut, sekaligus sebagai dokumentasi teknis atas seluruh proses yang telah dilakukan. Kami menyampaikan terima kasih kepada seluruh pihak yang telah mendukung kelancaran pekerjaan ini.

Semoga hasil kegiatan ini dapat memberikan kontribusi nyata dalam mendukung kinerja dan pelayanan KPI Pusat yang lebih optimal.

Bandung, April 2025
Tim Pelaksana

DAFTAR ISI

1. LATAR BELAKANG	2
2. MAKSUD DAN TUJUAN	2
3. RUANG LINGKUP PEKERJAAN	2
4. METODOLOGI PELAKSANAAN	2
5. HASIL PEKERJAAN	3
6. TIMELINE PEKERJAAN	3
7. DOKUMENTASI	4
8. PENUTUP	4
9. REKOMENDASI	30



1. LATAR BELAKANG

Kondisi jaringan LAN di Gedung KPI Pusat sebelumnya mengalami beberapa kendala seperti koneksi tidak stabil, kabel tidak tertata dengan baik, serta pelabelan yang tidak sesuai standar. Hal ini mengganggu efektivitas kerja serta efisiensi sistem komunikasi internal. Maka dari itu, dilakukan perapihan infrastruktur jaringan yang kurang memadai dan tidak terorganisir dengan baik. Hal ini dapat mengganggu kinerja kerja jaringan data baik didalam jaringan internal (INTRANET) maupun kinerja jaringan keluar (INTERNET), dan mengganggu efektivitas kerja serta efisiensi sistem komunikasi internal.

Oleh sebab itu dilakukan perapihan infrastruktur jaringan guna menciptakan sistem jaringan yang lebih tertib, aman, dan andal.

2. MAKSUD DAN TUJUAN

Kegiatan ini bertujuan untuk meningkatkan kualitas dan kinerja jaringan lokal (LAN) melalui:

- Penataan ulang kabel jaringan
 - Pelabelan titik koneksi sesuai standar
 - Pemetaan ulang jaringan baik dari sisi fisik infrastruktur dan konfigurasi distribusi
Dengan jaringan yang tertata rapi, proses troubleshooting menjadi lebih cepat dan efisien.
-

3. RUANG LINGKUP PEKERJAAN

Pekerjaan mencakup:

- Survei dan pemetaan awal kondisi jaringan
 - Perapihan dan penataan kabel UTP
 - Labeling ulang semua kabel dan titik koneksi
 - Pembuatan topologi jaringan terkini
 - Dokumentasi kondisi sebelum dan sesudah pekerjaan
-

4. METODOLOGI PELAKSANAAN

Pekerjaan dimulai dengan survei lokasi dan identifikasi kondisi jaringan. Kabel yang longgar atau tidak tertata diperbaiki atau diganti. Label-label kabel dibuat mengikuti standar penamaan berdasarkan lokasi ruangan. Pekerjaan dilakukan secara bertahap dan terkoordinasi antar lantai.



5. HASIL PEKERJAAN

Seluruh titik penting seperti Ruang Server, Ruang Staf, Ruang Analis, Ruang Humas, Ruang Visual Data, Ruang Rumah Tangga, Ruang Kerja dan Area Komisioner, Ruang PKSP telah dilakukan penataan ulang kabel. Label memudahkan pelacakan titik, dan pengujian koneksi membuktikan performa jaringan menjadi lebih stabil. Latency menurun dan tidak ada gangguan signifikan pasca pekerjaan.

Dengan selesainya pekerjaan PERAPIHAN INFRASTRUKTUR JARINGAN LAN, kegiatan operasional jaringan KPI Pusat bisa lebih baik dalam komunikasi data, baik secara internal maupun eksternal, dan admin jaringan (NET ADMIN) dapat dengan mudah dalam menangani infrastruktur jaringan (LAN) jika terjadi gangguan, sehingga analisa dan penyelesaian masalah lebih cepat dan akurat.

6. TIMELINE PEKERJAAN

Pekerjaan dilaksanakan sesuai dengan jadwal yang telah disepakati dalam TOR. Detail pelaksanaan per hari, ruangan, dan personel teknis dapat ditambahkan dalam bentuk tabel apabila dibutuhkan.

No	Uraian	WEEKS					
		I	II	III	IV	V	VI
A	Perapihan Kabel dan Labelling						
I	Lantai 3						
I.1	R. Server						
I.2	R. Staf						
I.3	R. Analis						
I.4	R. Visual Data						
I.5	R. Rumah Tangga						
II	Lantai 2						
II.1	R. Kerja						
II.2	R. PKSP						
B	Penarikan Baru Kabel UTP						
I	Lantai 1						
I.1	R. Humas						



7. DOKUMENTASI

Terlampir foto-foto kondisi jaringan sebelum dan sesudah pekerjaan, termasuk di :

- Lantai 3: Ruang Server, Ruang Staf, Ruang Analis, Ruang Visual Data, Ruang Rumah Tangga.
 - Lantai 2: Ruang Kerja dan Area Komisioner, Ruang PKSP
 - Lantai 1: Ruang Humas dan Area Receptionist
- Disertakan juga dokumentasi labeling dan topologi jaringan sebelum dan sesudah.
-

8. PENUTUP

Pekerjaan perapihan jaringan LAN di KPI Pusat telah selesai dengan hasil baik. Infrastruktur jaringan kini lebih tertib, aman, dan siap mendukung kebutuhan teknologi informasi ke depan. Disarankan agar KPI membuat SOP pengelolaan jaringan dan audit berkala sebagai bagian dari manajemen infrastruktur yang berkelanjutan.

Terlampir foto-foto dokumentasi pekerjaan sebelum dan sesudah, mencakup:

- Ruang Server, Ruang Staf, Ruang Analis, Ruang Visual Data, Ruang Rumah Tangga.
- Ruang Kerja dan Area Komisioner, Ruang PKSP
- Ruang Humas dan Area Receptionist
- Dokumentasi Labeling
- Topologi Jaringan

Foto-foto menunjukkan kondisi semula yang kurang rapih dan tidak tertata berubah menjadi jaringan yang rapih, aman, dan terstandarisasi.



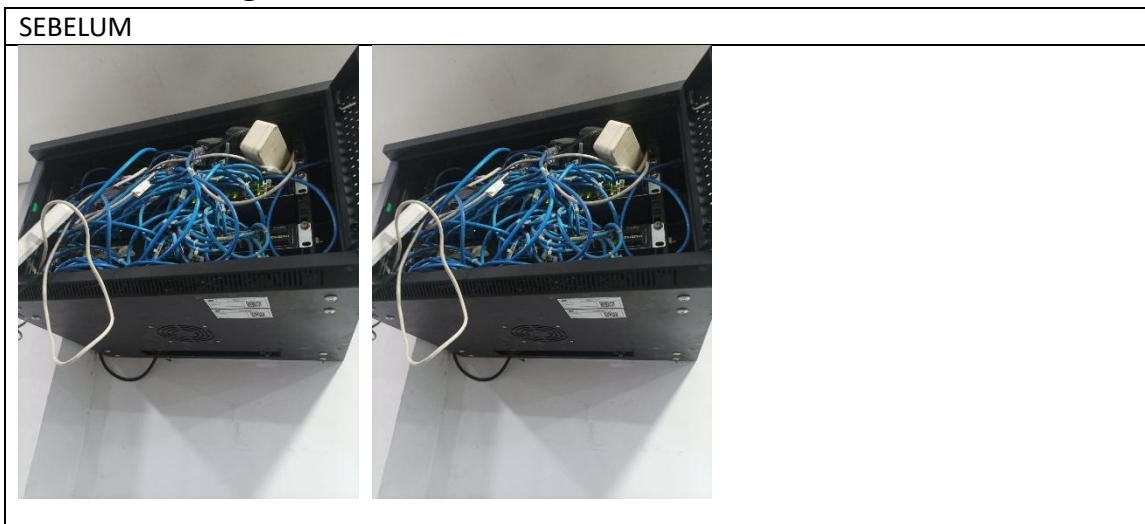
DEMATA AIRINDO, CV.

Office : Komplek Buana Soetta Blok G-33
Gedebage – Soekarno Hatta Bandung 40295
Phone : 081321294668 – (022) 87798513
E-mail : demataairindo@gmail.com

1. Lantai 3 – Ruang Server



2. Lantai 3 – Ruang Staff





DEMATA AIRINDO, CV.

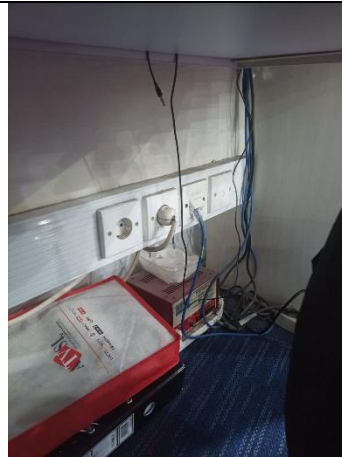
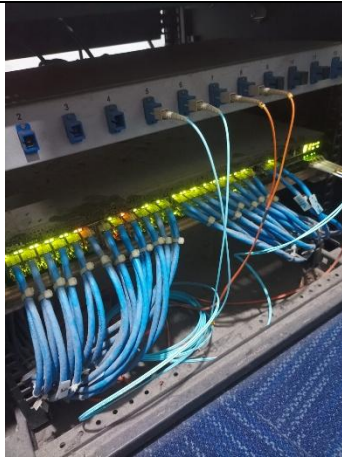
Office : Komplek Buana Soetta Blok G-33
Gedebage – Soekarno Hatta Bandung 40295
Phone : 081321294668 – (022) 87798513
E-mail : demataairindo@gmail.com

SESUDAH

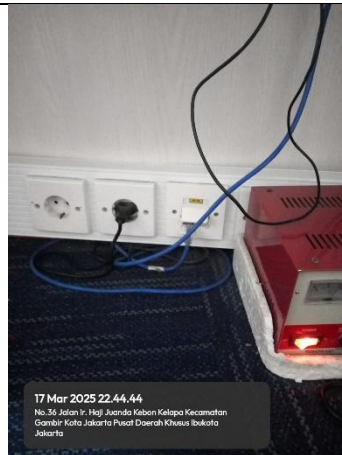


3. Lantai 3 – Ruang Analis

SEBELUM



SESUDAH

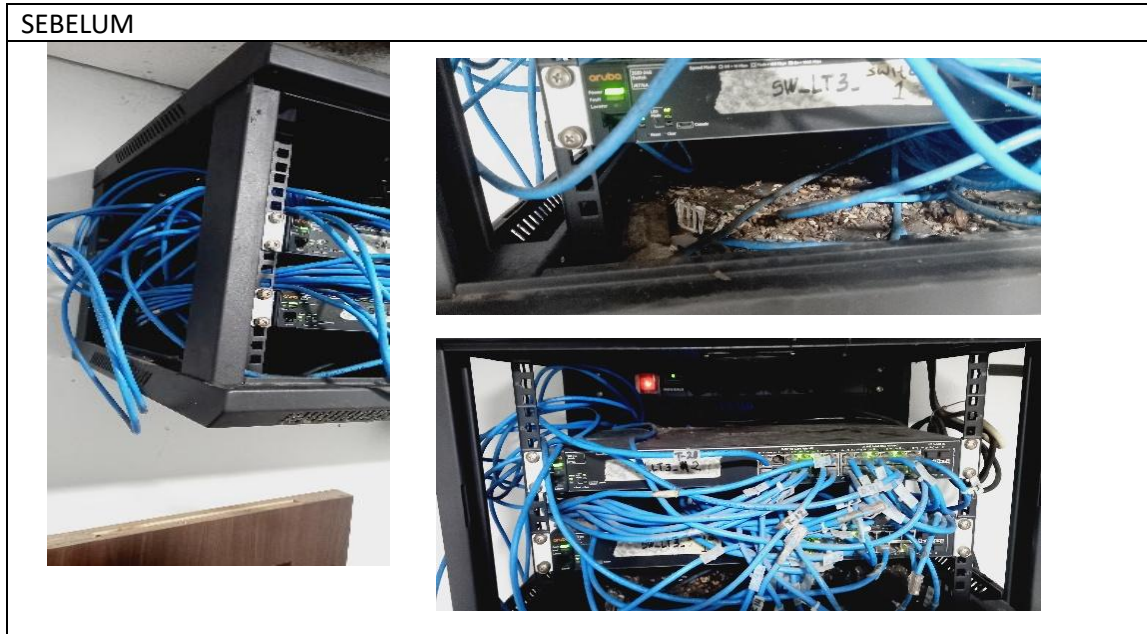




DEMATA AIRINDO, CV.

Office : Komplek Buana Soetta Blok G-33
Gedebage – Soekarno Hatta Bandung 40295
Phone : 081321294668 – (022) 87798513
E-mail : demataairindo@gmail.com

4. Lantai 3 – Rumah Tangga

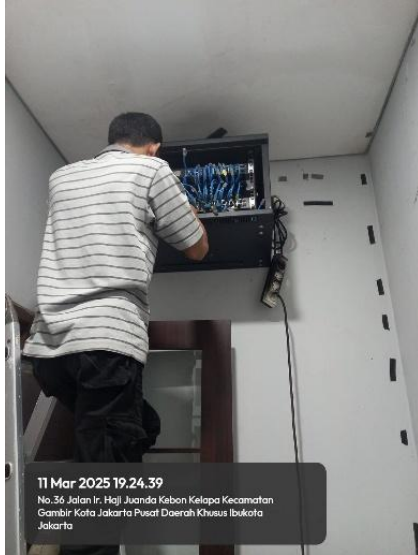




DEMATA AIRINDO, CV.

Office : Komplek Buana Soetta Blok G-33
Cedebage – Soekarno Hatta Bandung 40295
Phone : 081321294668 – (022) 87798513
E-mail : demataairindo@gmail.com

SESUDAH



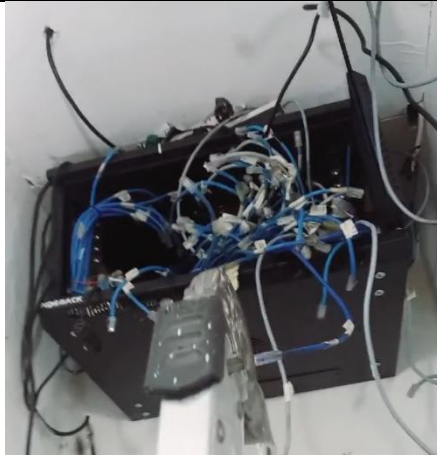


DEMATA AIRINDO, CV.

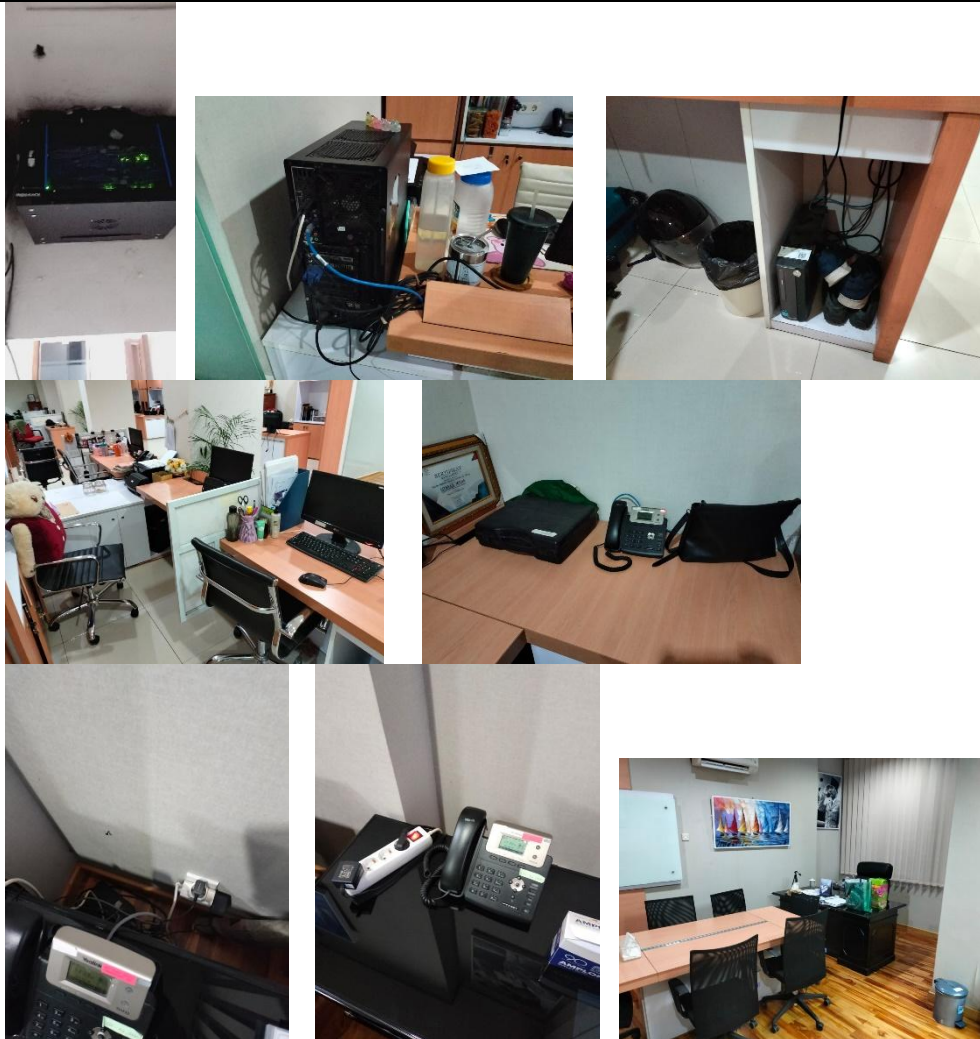
Office : Komplek Buana Soetta Blok G-33
Gedebage – Soekarno Hatta Bandung 40295
Phone : 081321294668 – (022) 87798513
E-mail : demataairindo@gmail.com

5. Lantai 2 – Ruang Asisten dan Sekertaris Komisioner

SEBELUM



SESUDAH





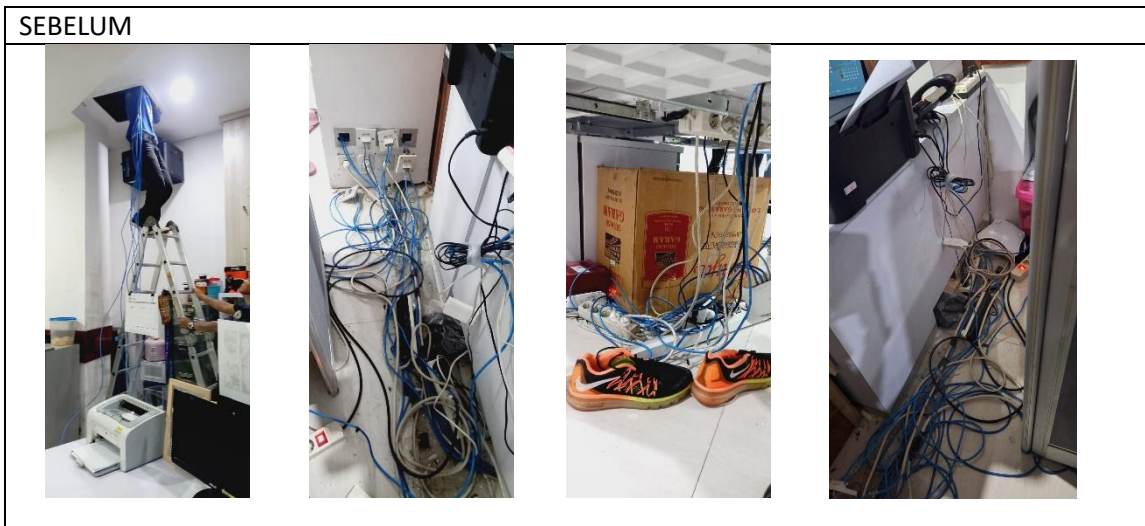
DEMATA AIRINDO, CV.

Office : Komplek Buana Soetta Blok G-33
Gedebage – Soekarno Hatta Bandung 40295
Phone : 081321294668 – (022) 87798513
E-mail : demataairindo@gmail.com

6. Lantai 2 – Ruang PKSP



7. Lantai 1 – Ruang Humas





DEMATA AIRINDO, CV.

Office : Komplek Buana Soetta Blok G-33
Gedebage – Soekarno Hatta Bandung 40295
Phone : 081321294668 – (022) 87798513
E-mail : demataairindo@gmail.com

SESUDAH





DEMATA AIRINDO, CV.

Office : Komplek Buana Soetta Blok G-33
Gedebage – Soekarno Hatta Bandung 40295
Phone : 081321294668 – (022) 87798513
E-mail : demataairindo@gmail.com

8. Lantai 3 – Visual Data



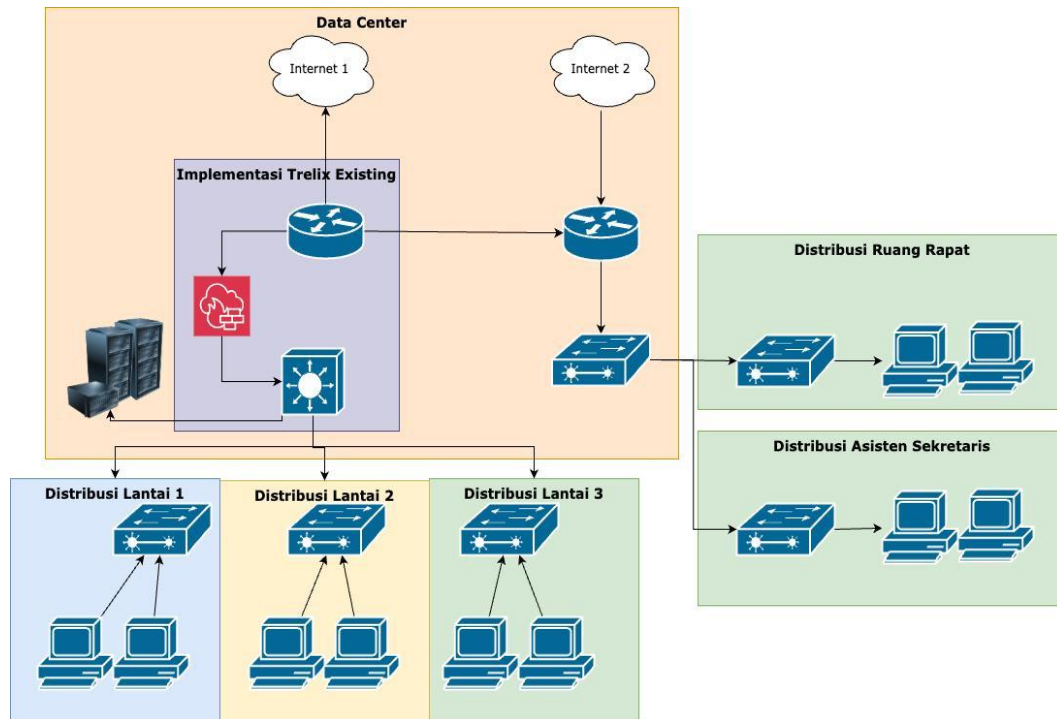
9. Labeling Sisi End User



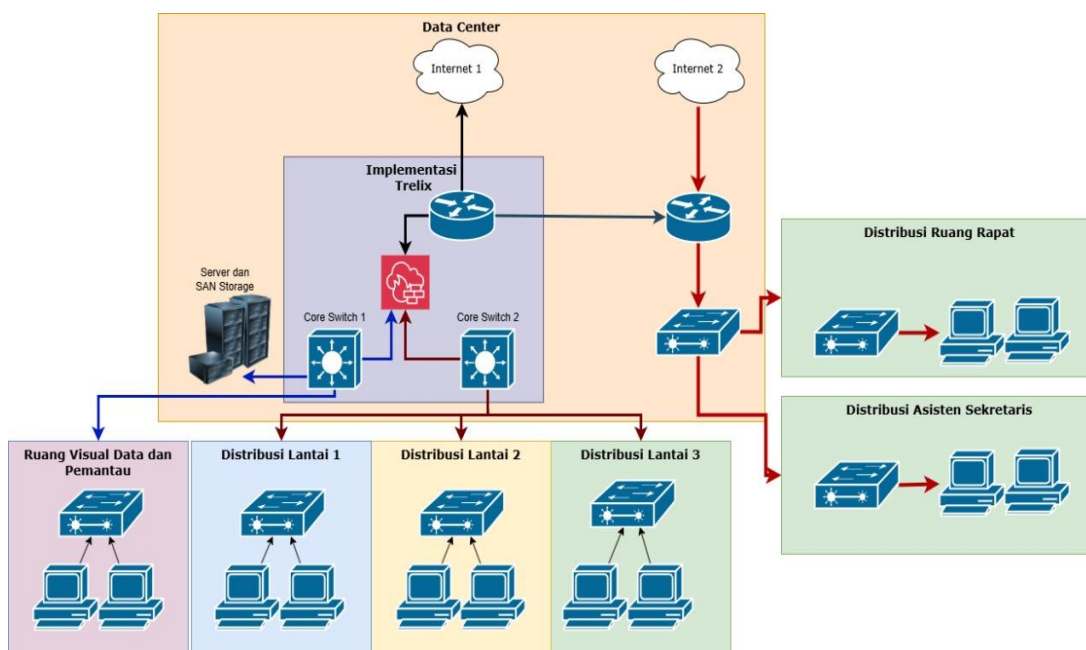


1. TOPOLOGY JARINGAN

- **Sebelum**



- **Sesudah**

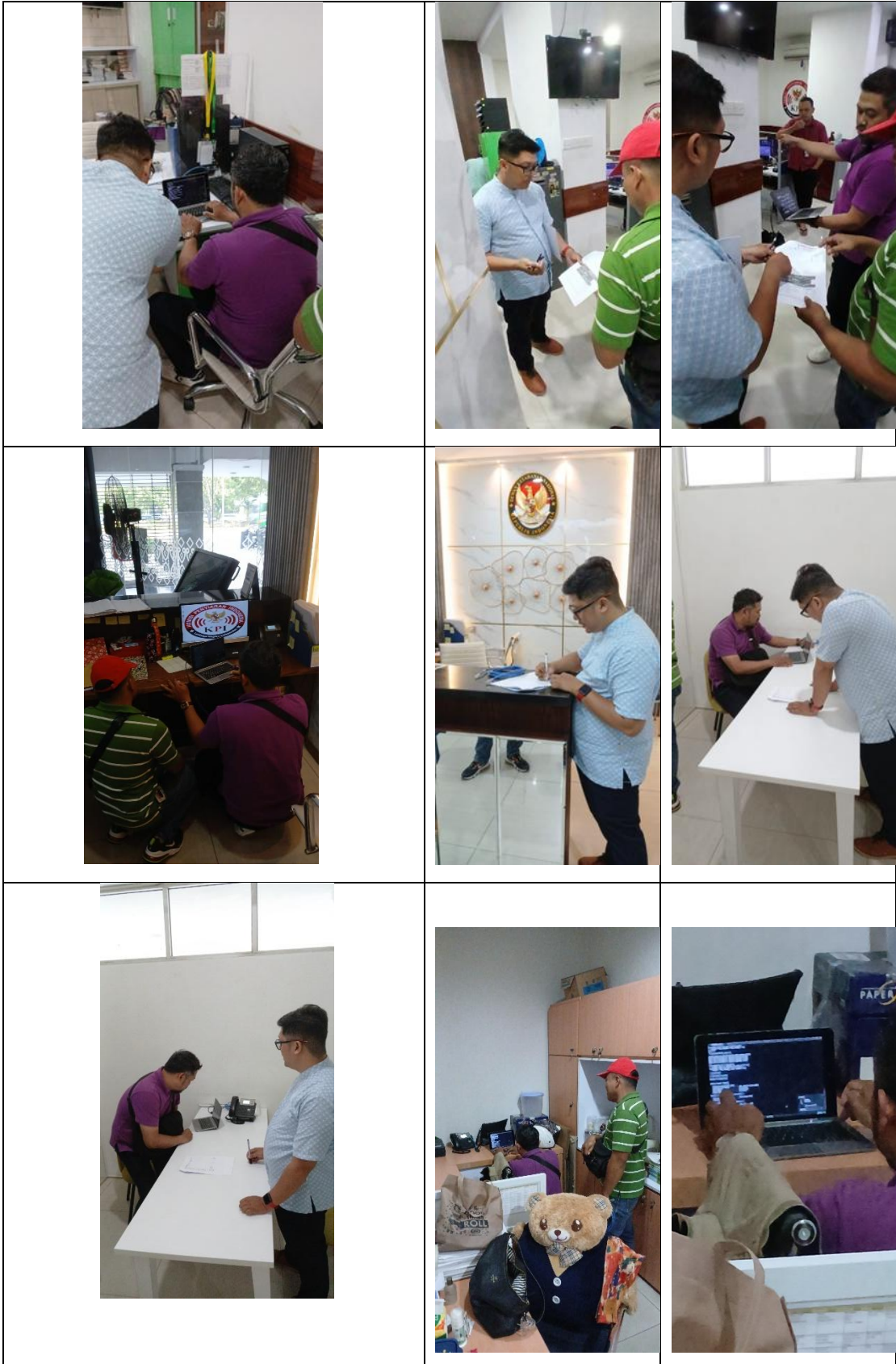




DEMATA AIRINDO, CV.

Office : Komplek Buana Soetta Blok G-33
Gedebage – Soekarno Hatta Bandung 40295
Phone : 081321294668 – (022) 87798513
E-mail : demataairindo@gmail.com

- Dokumentasi Test Commisioning





DEMATA AIRINDO, CV.

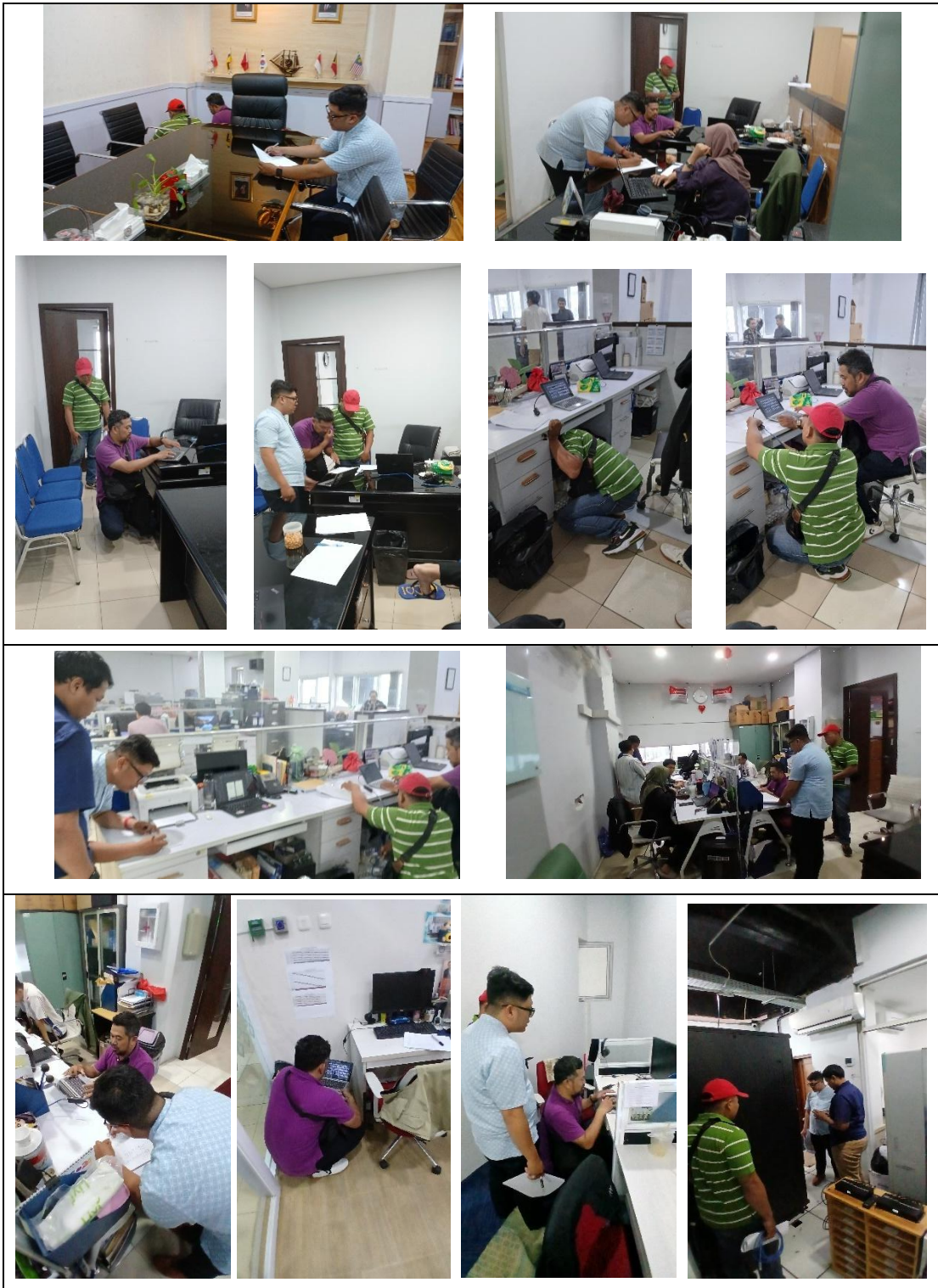
Office : Komplek Buana Soetta Blok G-33
Gedebage – Soekarno Hatta Bandung 40295
Phone : 081321294668 – (022) 87798513
E-mail : demataairindo@gmail.com





DEMATA AIRINDO, CV.

Office : Komplek Buana Soetta Blok G-33
Gedebage – Soekarno Hatta Bandung 40295
Phone : 081321294668 – (022) 87798513
E-mail : demataairindo@gmail.com





DEMATA AIRINDO, CV.

Office : Komplek Buana Soetta Blok G-33
Gedebage – Soekarno Hatta Bandung 40295
Phone : 081321294668 – (022) 87798513
E-mail : demataairindo@gmail.com





- **Hasil Test Ping Dari User ke arah Gateway dan ke arah Internet**

```
C:\Users\sofyano>ipconfig /all

Connection-specific DNS Suffix  . : 
Link-local IPv6 Address . . . . . : fe80::3bd1:cf79:42a8:e0937%
IPv6 Address. . . . . : 192.168.2.131
Subnet Mask . . . . . : 255.255.255.0
Default Gateway . . . . . : 192.168.2.1

Wireless LAN adapter Local Area Connection 1:
   Media State . . . . . : Media disconnected
   Connection-specific DNS Suffix  . : 
Wireless LAN adapter Local Area Connection 2:
   Media State . . . . . : Media disconnected
   Connection-specific DNS Suffix  . : 
Wireless LAN adapter Msi-Fi 2:
   Media State . . . . . : Media disconnected
   Connection-specific DNS Suffix  . : 

C:\Users\sofyano>ping 192.168.2.1

Pinging 192.168.2.1 with 32 bytes of data:
Reply from 192.168.2.1: bytes=32 time=1ms TTL=255
Reply from 192.168.2.1: bytes=32 time=1ms TTL=255
Reply from 192.168.2.1: bytes=32 time=1ms TTL=255
Reply from 192.168.2.1: bytes=32 time=1ms TTL=255

Ping statistics for 192.168.2.1:
    Packets: Sent = 4, Received = 4, Lost = 0 (0% loss),
    Approximate round trip times in milli-seconds:
        Minimum = 1ms, Maximum = 2ms, Average = 1ms

C:\Users\sofyano>ping google.com

Pinging google.com [74.125.209.138] with 32 bytes of data:
Reply from 74.125.209.138: bytes=32 time=18ms TTL=189
Reply from 74.125.209.138: bytes=32 time=18ms TTL=189
Reply from 74.125.209.138: bytes=32 time=17ms TTL=189
Reply from 74.125.209.138: bytes=32 time=17ms TTL=189

Ping statistics for 74.125.209.138:
    Packets: Sent = 4, Received = 4, Lost = 0 (0% loss),
    Approximate round trip times in milli-seconds:
        Minimum = 17ms, Maximum = 18ms, Average = 17ms

C:\Users\sofyano>
```

Ruang Pemantau – PT.40

```
Ethernet adapter Ethernet:

Connection-specific DNS Suffix  . : 
Link-local IPv6 Address . . . . . : fe80::3bd1:cf79:42a8:e0937%
IPv6 Address. . . . . : 192.168.88.208
Subnet Mask . . . . . : 255.255.255.0
Default Gateway . . . . . : 192.168.88.1

Wireless LAN adapter Local Area Connection 1:
   Media State . . . . . : Media disconnected
   Connection-specific DNS Suffix  . : 
Wireless LAN adapter Local Area Connection 2:
   Media State . . . . . : Media disconnected
   Connection-specific DNS Suffix  . : 
Wireless LAN adapter Msi-Fi 2:
   Media State . . . . . : Media disconnected
   Connection-specific DNS Suffix  . : 

C:\Users\sofyano>ping 192.168.88.1

Pinging 192.168.88.1 with 32 bytes of data:
Reply from 192.168.88.1: bytes=32 time=2ms TTL=64
Reply from 192.168.88.1: bytes=32 time=2ms TTL=64
Reply from 192.168.88.1: bytes=32 time=1ms TTL=64
Reply from 192.168.88.1: bytes=32 time=1ms TTL=64

Ping statistics for 192.168.88.1:
    Packets: Sent = 4, Received = 4, Lost = 0 (0% loss),
    Approximate round trip times in milli-seconds:
        Minimum = 1ms, Maximum = 2ms, Average = 1ms

C:\Users\sofyano>ping google.com

Pinging google.com [142.251.12.113] with 32 bytes of data:
Reply from 142.251.12.113: bytes=32 time=18ms TTL=186
Reply from 142.251.12.113: bytes=32 time=18ms TTL=186
Reply from 142.251.12.113: bytes=32 time=18ms TTL=186
Reply from 142.251.12.113: bytes=32 time=18ms TTL=186

Ping statistics for 142.251.12.113:
    Packets: Sent = 4, Received = 4, Lost = 0 (0% loss),
    Approximate round trip times in milli-seconds:
        Minimum = 18ms, Maximum = 18ms, Average = 18ms

C:\Users\sofyano>
```

Rupatama – RP.01

```
C:\Users\sofyano>ipconfig /all

Connection-specific DNS Suffix  . : 
Link-local IPv6 Address . . . . . : fe80::3bd1:cf79:42a8:e0937%
IPv6 Address. . . . . : 192.168.3.11
Subnet Mask . . . . . : 255.255.255.0
Default Gateway . . . . . : 192.168.3.1

Wireless LAN adapter Local Area Connection 1:
   Media State . . . . . : Media disconnected
   Connection-specific DNS Suffix  . : 
Wireless LAN adapter Local Area Connection 2:
   Media State . . . . . : Media disconnected
   Connection-specific DNS Suffix  . : 
Wireless LAN adapter Msi-Fi 2:
   Media State . . . . . : Media disconnected
   Connection-specific DNS Suffix  . : 

C:\Users\sofyano>ping 192.168.3.1

Pinging 192.168.3.1 with 32 bytes of data:
Reply from 192.168.3.1: bytes=32 time=1ms TTL=255
Reply from 192.168.3.1: bytes=32 time=1ms TTL=255
Reply from 192.168.3.1: bytes=32 time=1ms TTL=255
Reply from 192.168.3.1: bytes=32 time=1ms TTL=255

Ping statistics for 192.168.3.1:
    Packets: Sent = 4, Received = 4, Lost = 0 (0% loss),
    Approximate round trip times in milli-seconds:
        Minimum = 1ms, Maximum = 2ms, Average = 1ms

C:\Users\sofyano>ping google.com

Pinging google.com [74.125.209.138] with 32 bytes of data:
Reply from 74.125.209.138: bytes=32 time=18ms TTL=186
Reply from 74.125.209.138: bytes=32 time=18ms TTL=186
Reply from 74.125.209.138: bytes=32 time=18ms TTL=186
Reply from 74.125.209.138: bytes=32 time=18ms TTL=186

Ping statistics for 74.125.209.138:
    Packets: Sent = 4, Received = 4, Lost = 0 (0% loss),
    Approximate round trip times in milli-seconds:
        Minimum = 17ms, Maximum = 18ms, Average = 17ms

C:\Users\sofyano>
```

Ruang Visual Data – VD.01



DEMATA AIRINDO, CV.

Office : Komplek Buana Soetta Blok G-33
Cedebage – Soekarno Hatta Bandung 40295
Phone : 081321294668 – (022) 87798513
E-mail : demataairindo@gmail.com

```
C:\Windows\system32\cmd.exe
Ethernet adapter Ethernet:
   Connection-specific DNS Suffix  . : 
   Link-local IPv6 Address . . . . . : fe80::5bd1:cf9:42a8:e093%7
   IPv4 Address. . . . . : 172.16.36.1
   Subnet Mask . . . . . : 255.255.255.0
   Default Gateway . . . . . : 172.16.36.1

Wireless LAN adapter Local Area Connection 1:
   Media State . . . . . : Media disconnected
   Connection-specific DNS Suffix  . : 

Wireless LAN adapter Local Area Connection 2:
   Media State . . . . . : Media disconnected
   Connection-specific DNS Suffix  . : 

Wireless LAN adapter Wi-Fi 2:
   Media State . . . . . : Media disconnected
   Connection-specific DNS Suffix  . : 

C:\Users\Sofyan>ping 172.16.36.1

Pinging 172.16.36.1 with 32 bytes of data:
Reply from 172.16.36.1: bytes=32 time=1ms TTL=64
Reply from 172.16.36.1: bytes=32 time=1ms TTL=64
Reply from 172.16.36.1: bytes=32 time=1ms TTL=64
Reply from 172.16.36.1: bytes=32 time=1ms TTL=64

Ping statistics for 172.16.36.1:
    Packets: Sent = 4, Received = 4, Lost = 0 (0% loss),
    Approximate round trip times in milli-seconds:
        Minimum = 1ms, Maximum = 1ms, Average = 1ms

C:\Users\Sofyan>ping google.com

Pinging google.com [74.125.200.138] with 32 bytes of data:
Reply from 74.125.200.138: bytes=32 time=17ms TTL=187
Reply from 74.125.200.138: bytes=32 time=17ms TTL=187
Reply from 74.125.200.138: bytes=32 time=17ms TTL=187
Reply from 74.125.200.138: bytes=32 time=17ms TTL=187

Ping statistics for 74.125.200.138:
    Packets: Sent = 4, Received = 4, Lost = 0 (0% loss),
    Approximate round trip times in milli-seconds:
        Minimum = 16ms, Maximum = 17ms, Average = 16ms
```

Ruang Humas – HU.06

```
C:\Windows\system32\cmd.exe
Wireless LAN adapter Local Area Connection 2:
   Media State . . . . . : Media disconnected
   Connection-specific DNS Suffix  . : 

Ethernet adapter Ethernet:
   Connection-specific DNS Suffix  . : 
   IPv6 Address. . . . . : fe80::4d9:4a03:4e4b:0:66fa:a3b7:f5b1:c63d
   Temporary IPv6 Address. . . . . : fe80::4a62:4a4b:0:56c6:cc3:ede4
   Link-local IPv6 Address . . . . . : fe80::5bd1:cf9:42a8:e093%7
   IPv4 Address. . . . . : 172.21.1.1
   Subnet Mask . . . . . : 255.255.255.0
   Default Gateway . . . . . : 172.21.1.1

Wireless LAN adapter Wi-Fi 2:
   Media State . . . . . : Media disconnected
   Connection-specific DNS Suffix  . : 

C:\Users\Sofyan>ping 172.21.1.1

Pinging 172.21.1.1 with 32 bytes of data:
Reply from 172.21.1.1: bytes=32 time=1ms TTL=64
Reply from 172.21.1.1: bytes=32 time=1ms TTL=64
Reply from 172.21.1.1: bytes=32 time=1ms TTL=64
Reply from 172.21.1.1: bytes=32 time=1ms TTL=64

Ping statistics for 172.21.1.1:
    Packets: Sent = 4, Received = 4, Lost = 0 (0% loss),
    Approximate round trip times in milli-seconds:
        Minimum = 1ms, Maximum = 1ms, Average = 1ms

C:\Users\Sofyan>ping google.com

Pinging google.com [74.125.200.138] with 32 bytes of data:
Reply from 74.125.200.138: bytes=32 time=18ms TTL=186
Reply from 74.125.200.138: bytes=32 time=18ms TTL=186
Reply from 74.125.200.138: bytes=32 time=18ms TTL=186
Reply from 74.125.200.138: bytes=32 time=18ms TTL=186

Ping statistics for 74.125.200.138:
    Packets: Sent = 4, Received = 4, Lost = 0 (0% loss),
    Approximate round trip times in milli-seconds:
        Minimum = 18ms, Maximum = 18ms, Average = 18ms

C:\Users\Sofyan>
```

Ruang Komisioner – R23.01

```
C:\Windows\system32\cmd.exe
Ethernet adapter Ethernet:
   Connection-specific DNS Suffix  . : 
   Link-local IPv6 Address . . . . . : fe80::5bd1:cf9:42a8:e093%7
   IPv4 Address. . . . . : 172.16.36.1
   Subnet Mask . . . . . : 255.255.255.0
   Default Gateway . . . . . : 172.16.36.1

Wireless LAN adapter Local Area Connection 1:
   Media State . . . . . : Media disconnected
   Connection-specific DNS Suffix  . : 

Wireless LAN adapter Local Area Connection 2:
   Media State . . . . . : Media disconnected
   Connection-specific DNS Suffix  . : 

Wireless LAN adapter Wi-Fi 2:
   Media State . . . . . : Media disconnected
   Connection-specific DNS Suffix  . : 

C:\Users\Sofyan>ping 172.16.36.1

Pinging 172.16.36.1 with 32 bytes of data:
Reply from 172.16.36.1: bytes=32 time=1ms TTL=64
Reply from 172.16.36.1: bytes=32 time=1ms TTL=64
Reply from 172.16.36.1: bytes=32 time=1ms TTL=64
Reply from 172.16.36.1: bytes=32 time=1ms TTL=64

Ping statistics for 172.16.36.1:
    Packets: Sent = 4, Received = 4, Lost = 0 (0% loss),
    Approximate round trip times in milli-seconds:
        Minimum = 1ms, Maximum = 1ms, Average = 1ms

C:\Users\Sofyan>ping google.com

Pinging google.com [74.125.200.138] with 32 bytes of data:
Reply from 74.125.200.138: bytes=32 time=18ms TTL=187
Reply from 74.125.200.138: bytes=32 time=18ms TTL=187
Reply from 74.125.200.138: bytes=32 time=18ms TTL=187
Reply from 74.125.200.138: bytes=32 time=18ms TTL=187

Ping statistics for 74.125.200.138:
    Packets: Sent = 4, Received = 4, Lost = 0 (0% loss),
    Approximate round trip times in milli-seconds:
```

Ruang Litbang – LT.01



DEMATA AIRINDO, CV.

Office : Komplek Buana Soetta Blok G-33
Cedebage – Soekarno Hatta Bandung 40295
Phone : 081321294668 – (022) 87798513
E-mail : demataairindo@gmail.com

```
Connection-specific DNS Suffix . :  
Link-Local IPv6 Address . . . . . : fe80::5bd1:fcf9:42ab:e893V7  
IPv6 Address . . . . . : 172.16.33.1  
Subnet Mask . . . . . : 255.255.255.0  
Default Gateway . . . . . : 172.16.33.1  
  
Wireless LAN adapter Local Area Connection 1:  
Media State . . . . . : Media disconnected  
Connection-specific DNS Suffix . :  
  
Wireless LAN adapter Local Area Connection 2:  
Media State . . . . . : Media disconnected  
Connection-specific DNS Suffix . :  
  
Wireless LAN adapter Wi-Fi 2:  
Media State . . . . . : Media disconnected  
Connection-specific DNS Suffix . :  
  
C:\Users\Sofyan>ping 172.16.33.1  
Pinging 172.16.33.1 with 32 bytes of data:  
Reply from 172.16.33.1: bytes=32 time=1ms TTL=64  
Reply from 172.16.33.1: bytes=32 time=1ms TTL=64  
Reply from 172.16.33.1: bytes=32 time=1ms TTL=64  
Reply from 172.16.33.1: bytes=32 time=1ms TTL=64  
  
Ping statistics for 172.16.33.1:  
Packets: Sent = 4, Received = 4, Lost = 0 (0% loss),  
Approximate round trip times in milli-seconds:  
Minimum = 1ms, Maximum = 1ms, Average = 1ms  
  
C:\Users\Sofyan>ping google.com  
Pinging google.com [74.125.208.113] with 32 bytes of data:  
Reply from 74.125.208.113: bytes=32 time=17ms TTL=118  
Reply from 74.125.208.113: bytes=32 time=17ms TTL=118  
Reply from 74.125.208.113: bytes=32 time=17ms TTL=118  
Reply from 74.125.208.113: bytes=32 time=17ms TTL=118  
  
Ping statistics for 74.125.208.113:  
Packets: Sent = 4, Received = 4, Lost = 0 (0% loss),  
Approximate round trip times in milli-seconds:  
Minimum = 17ms, Maximum = 18ms, Average = 17ms
```

Lantai 2 – RA.01

```
Media State . . . . . : Media disconnected  
Connection-specific DNS Suffix . :  
  
Wireless LAN adapter Local Area Connection 2:  
Media State . . . . . : Media disconnected  
Connection-specific DNS Suffix . :  
  
Ethernet adapter Ethernet:  
Connection-specific DNS Suffix . :  
Link-Local IPv6 Address . . . . . : fe80::5bd1:fcf9:42ab:e893V7  
IPv6 Address . . . . . : 172.16.33.1  
Subnet Mask . . . . . : 255.255.255.0  
Default Gateway . . . . . : 172.16.33.1  
  
Wireless LAN adapter Wi-Fi 2:  
Media State . . . . . : Media disconnected  
Connection-specific DNS Suffix . :  
  
C:\Users\Sofyan>ping 172.16.33.1  
Pinging 172.16.33.1 with 32 bytes of data:  
Reply from 172.16.33.1: bytes=32 time=1ms TTL=64  
Reply from 172.16.33.1: bytes=32 time=1ms TTL=64  
Reply from 172.16.33.1: bytes=32 time=1ms TTL=64  
Reply from 172.16.33.1: bytes=32 time=1ms TTL=64  
  
Ping statistics for 172.16.33.1:  
Packets: Sent = 4, Received = 4, Lost = 0 (0% loss),  
Approximate round trip times in milli-seconds:  
Minimum = 1ms, Maximum = 1ms, Average = 1ms  
  
C:\Users\Sofyan>ping google.com  
Pinging google.com [74.125.208.113] with 32 bytes of data:  
Reply from 74.125.208.113: bytes=32 time=18ms TTL=118  
Reply from 74.125.208.113: bytes=32 time=17ms TTL=118  
Reply from 74.125.208.113: bytes=32 time=17ms TTL=118  
Reply from 74.125.208.113: bytes=32 time=18ms TTL=118  
  
Ping statistics for 74.125.208.113:  
Packets: Sent = 4, Received = 4, Lost = 0 (0% loss),  
Approximate round trip times in milli-seconds:  
Minimum = 17ms, Maximum = 18ms, Average = 17ms
```

Lantai 3, Ruang Keuangan – KU.09

```
Connection-specific DNS Suffix . :  
Link-Local IPv6 Address . . . . . : fe80::5bd1:fcf9:42ab:e893V7  
IPv6 Address . . . . . : 172.16.33.1  
Subnet Mask . . . . . : 255.255.255.0  
Default Gateway . . . . . : 172.16.33.1  
  
Wireless LAN adapter Local Area Connection 1:  
Media State . . . . . : Media disconnected  
Connection-specific DNS Suffix . :  
  
Wireless LAN adapter Local Area Connection 2:  
Media State . . . . . : Media disconnected  
Connection-specific DNS Suffix . :  
  
Wireless LAN adapter Wi-Fi 2:  
Media State . . . . . : Media disconnected  
Connection-specific DNS Suffix . :  
  
C:\Users\Sofyan>ping 172.16.33.1  
Pinging 172.16.33.1 with 32 bytes of data:  
Reply from 172.16.33.1: bytes=32 time=1ms TTL=64  
Reply from 172.16.33.1: bytes=32 time=1ms TTL=64  
Reply from 172.16.33.1: bytes=32 time=1ms TTL=64  
Reply from 172.16.33.1: bytes=32 time=1ms TTL=64  
  
Ping statistics for 172.16.33.1:  
Packets: Sent = 4, Received = 4, Lost = 0 (0% loss),  
Approximate round trip times in milli-seconds:  
Minimum = 1ms, Maximum = 1ms, Average = 1ms  
  
C:\Users\Sofyan>ping google.com  
Pinging google.com [74.125.208.100] with 32 bytes of data:  
Reply from 74.125.208.100: bytes=32 time=17ms TTL=107  
Reply from 74.125.208.100: bytes=32 time=17ms TTL=107  
Reply from 74.125.208.100: bytes=32 time=17ms TTL=107  
Reply from 74.125.208.100: bytes=32 time=17ms TTL=107  
  
Ping statistics for 74.125.208.100:  
Packets: Sent = 4, Received = 4, Lost = 0 (0% loss),  
Approximate round trip times in milli-seconds:  
Minimum = 17ms, Maximum = 18ms, Average = 17ms
```

Lantai 3 – L3.34



DEMATA AIRINDO, CV.

Office : Komplek Buana Soetta Blok G-33
Cedebage – Soekarno Hatta Bandung 40295
Phone : 081321294668 – (022) 87798513
E-mail : demataairindo@gmail.com

```
C:\Users\sofyanyang> ipconfig /all

Media State . . . . . : Media disconnected
Connection-specific DNS Suffix . . . . . :

Wireless LAN adapter Local Area Connection* 2:
Media State . . . . . : Media disconnected
Connection-specific DNS Suffix . . . . . :

Ethernet adapter Ethernet:
Connection-specific DNS Suffix . . . . . :
Link-local IPv6 Address . . . . . : fe80::3bd1:fcf9:42a8:e9397
IPv6 Address. . . . . : 172.16.32.1
Subnet Mask . . . . . : 255.255.255.0
Default Gateway . . . . . : 172.16.32.1

Wireless LAN adapter Wi-Fi 2:
Media State . . . . . : Media disconnected
Connection-specific DNS Suffix . . . . . :

C:\Users\sofyanyang> ping 172.16.32.1

Pinging 172.16.32.1 with 32 bytes of data:
Reply from 172.16.32.1: bytes=32 time=1ms TTL=64
Reply from 172.16.32.1: bytes=32 time=1ms TTL=64
Reply from 172.16.32.1: bytes=32 time=1ms TTL=64
Reply from 172.16.32.1: bytes=32 time=1ms TTL=64

Ping statistics for 172.16.32.1:
    Packets: Sent = 4, Received = 4, Lost = 0 (0% loss),
    Approximate round trip times in milli-seconds:
        Minimum = 1ms, Maximum = 1ms, Average = 1ms

C:\Users\sofyanyang> ping google.com

Pinging google.com [74.125.209.138] with 32 bytes of data:
Reply from 74.125.209.138: bytes=32 time=13ms TTL=118
Reply from 74.125.209.138: bytes=32 time=13ms TTL=118
Reply from 74.125.209.138: bytes=32 time=13ms TTL=118
Reply from 74.125.209.138: bytes=32 time=13ms TTL=118

Ping statistics for 74.125.209.138:
    Packets: Sent = 4, Received = 4, Lost = 0 (0% loss),
    Approximate round trip times in milli-seconds:
        Minimum = 12ms, Maximum = 13ms, Average = 12ms

C:\Users\sofyanyang>
```

Lantai 3, Ruang Rumah Tangga – RT.06

```
C:\Users\sofyanyang> ipconfig /all

Ethernet adapter Ethernet:
Connection-specific DNS Suffix . . . . . :
Link-local IPv6 Address . . . . . : fe80::3bd1:fcf9:42a8:e9397
IPv6 Address. . . . . : 172.16.34.1
Subnet Mask . . . . . : 255.255.255.0
Default Gateway . . . . . : 172.16.34.1

Wireless LAN adapter Local Area Connection* 1:
Media State . . . . . : Media disconnected
Connection-specific DNS Suffix . . . . . :

Wireless LAN adapter Local Area Connection* 2:
Media State . . . . . : Media disconnected
Connection-specific DNS Suffix . . . . . :

Wireless LAN adapter Wi-Fi 2:
Media State . . . . . : Media disconnected
Connection-specific DNS Suffix . . . . . :

C:\Users\sofyanyang> ping 172.16.34.1

Pinging 172.16.34.1 with 32 bytes of data:
Reply from 172.16.34.1: bytes=32 time=1ms TTL=64
Reply from 172.16.34.1: bytes=32 time=1ms TTL=64
Reply from 172.16.34.1: bytes=32 time=1ms TTL=64
Reply from 172.16.34.1: bytes=32 time=1ms TTL=64

Ping statistics for 172.16.34.1:
    Packets: Sent = 4, Received = 4, Lost = 0 (0% loss),
    Approximate round trip times in milli-seconds:
        Minimum = 1ms, Maximum = 2ms, Average = 1ms

C:\Users\sofyanyang> ping google.com

Pinging google.com [74.125.209.138] with 32 bytes of data:
Reply from 74.125.209.138: bytes=32 time=13ms TTL=118
Reply from 74.125.209.138: bytes=32 time=13ms TTL=118
Reply from 74.125.209.138: bytes=32 time=13ms TTL=118
Reply from 74.125.209.138: bytes=32 time=13ms TTL=118

Ping statistics for 74.125.209.138:
    Packets: Sent = 4, Received = 4, Lost = 0 (0% loss),
    Approximate round trip times in milli-seconds:
        Minimum = 12ms, Maximum = 13ms, Average = 12ms

C:\Users\sofyanyang>
```

Lantai 3 – SES.02

```
C:\Users\sofyanyang> ipconfig /all

Ethernet adapter Ethernet:
Connection-specific DNS Suffix . . . . . :
Link-local IPv6 Address . . . . . : fe80::3bd1:fcf9:42a8:e9397
IPv6 Address. . . . . : 172.16.37.1
Subnet Mask . . . . . : 255.255.255.0
Default Gateway . . . . . : 172.16.37.1

Wireless LAN adapter Local Area Connection* 1:
Media State . . . . . : Media disconnected
Connection-specific DNS Suffix . . . . . :

Wireless LAN adapter Local Area Connection* 2:
Media State . . . . . : Media disconnected
Connection-specific DNS Suffix . . . . . :

Wireless LAN adapter Wi-Fi 2:
Media State . . . . . : Media disconnected
Connection-specific DNS Suffix . . . . . :

C:\Users\sofyanyang> ping 172.16.37.1

Pinging 172.16.37.1 with 32 bytes of data:
Reply from 172.16.37.1: bytes=32 time=1ms TTL=64
Reply from 172.16.37.1: bytes=32 time=1ms TTL=64
Reply from 172.16.37.1: bytes=32 time=1ms TTL=64
Reply from 172.16.37.1: bytes=32 time=1ms TTL=64

Ping statistics for 172.16.37.1:
    Packets: Sent = 4, Received = 4, Lost = 0 (0% loss),
    Approximate round trip times in milli-seconds:
        Minimum = 1ms, Maximum = 1ms, Average = 1ms

C:\Users\sofyanyang> ping google.com

Pinging google.com [74.125.209.138] with 32 bytes of data:
Reply from 74.125.209.138: bytes=32 time=13ms TTL=118
Reply from 74.125.209.138: bytes=32 time=13ms TTL=118
Reply from 74.125.209.138: bytes=32 time=13ms TTL=118
Reply from 74.125.209.138: bytes=32 time=13ms TTL=118

Ping statistics for 74.125.209.138:
    Packets: Sent = 4, Received = 4, Lost = 0 (0% loss),
    Approximate round trip times in milli-seconds:
        Minimum = 13ms, Maximum = 16ms, Average = 13ms

C:\Users\sofyanyang>
```

Ruang PKSP – PK.09



DEMATA AIRINDO, CV.

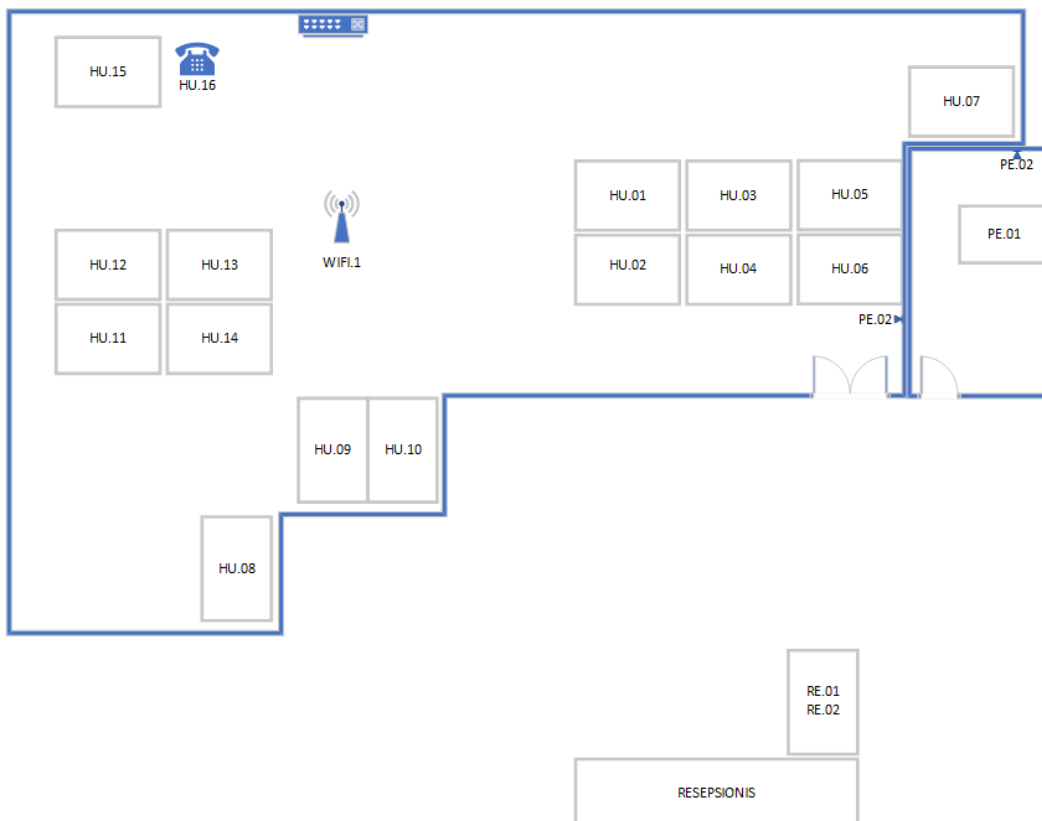
Office : Komplek Buana Soetta Blok G-33
Gedebage – Soekarno Hatta Bandung 40295
Phone : 081321294668 – (022) 87798513
E-mail : demataairindo@gmail.com

- **MAPPING TITIK JARINGAN**
- **RUANG HUMAS LANTAI 1**



Port Legend :

1 → HU.01	13 → HU.13
2 → HU.02	14 → HU.14
3 → HU.03	15 → HU.15
4 → HU.04	16 → HU.16
5 → HU.05	17 → KOSONG
6 → HU.06	18 → RE.01
7 → HU.07	19 → RE.02
8 → HU.08	20 → PE.01
9 → HU.09	21 → PE.02
10 → HU.10	22 → KOSONG
11 → HU.11	23 → WIFI.1
12 → HU.12	24 → BBLT.1 DC

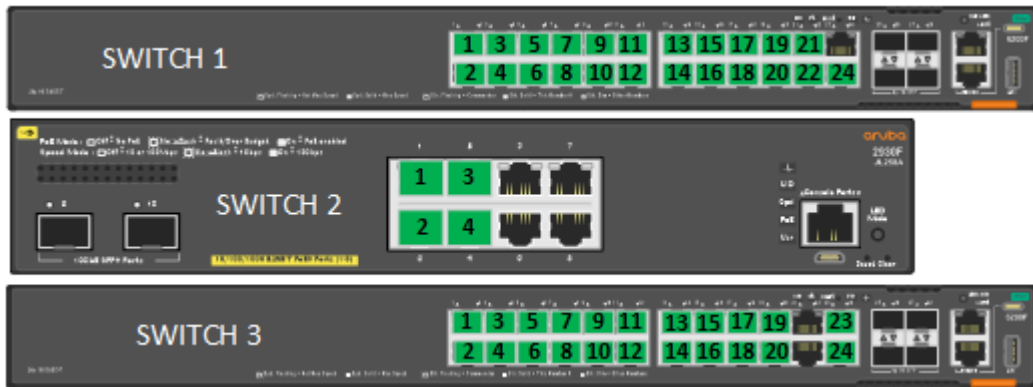




DEMATA AIRINDO, CV.

Office : Komplek Buana Soetta Blok G-33
Gedebage – Soekarno Hatta Bandung 40295
Phone : 081321294668 – (022) 87798513
E-mail : demataairindo@gmail.com

• LANTAI 2



Port Legend Switch 1 :

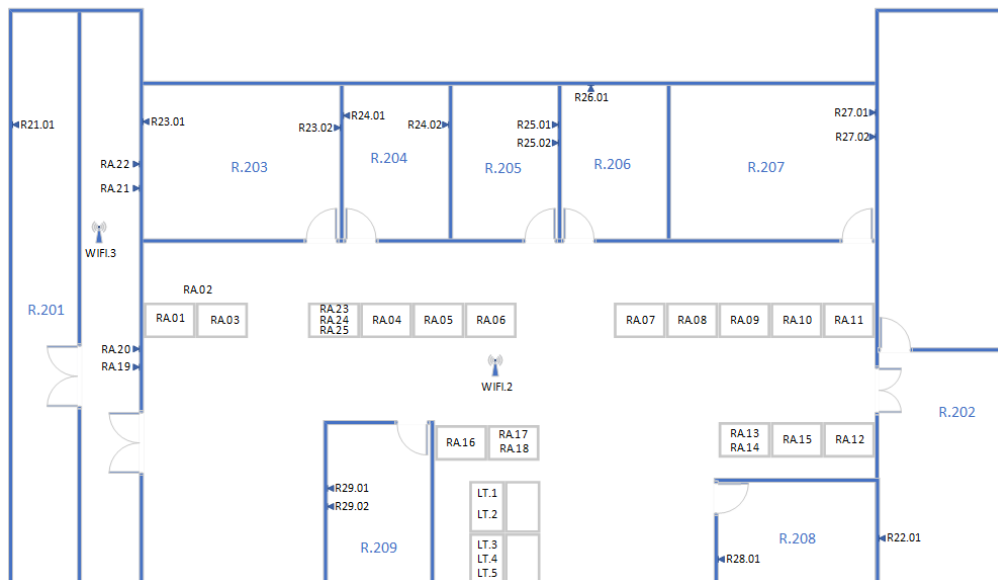
- 1 → RA.01
- 2 → RA.02
- 3 → RA.03
- 4 → RA.04
- 5 → RA.05
- 6 → RA.06
- 7 → RA.07
- 8 → RA.08
- 9 → RA.09
- 10 → RA.10
- 11 → RA.11
- 12 → RA.12
- 13 → RA.13
- 14 → RA.14
- 15 → RA.15
- 16 → RA.16
- 17 → RA.17
- 18 → RA.18
- 19 → RA.19
- 20 → RA.20
- 21 → RA.21
- 22 → RA.22
- 23 → KOSONG
- 24 → BBL2 DC

Port Legend Switch 2 :

- 1 → WIFI.2
- 2 → WIFI.3
- 3 → R.Rapat Besar
- 4 → BBL2 SW.3

Port Legend Switch 3 :

- 1 → R21.01
- 2 → R22.01
- 3 → R23.01
- 4 → R23.02
- 5 → R24.01
- 6 → R24.02
- 7 → R25.01
- 8 → R25.02
- 9 → R26.01
- 10 → R26.02
- 11 → R27.01
- 12 → R27.02
- 13 → R28.01
- 14 → R29.01
- 15 → R29.02
- 16 → LT.1
- 17 → LT.2
- 18 → LT.3
- 19 → LT.4
- 20 → LT.5
- 21 → KOSONG
- 22 → KOSONG
- 23 → BB PKSP
- 24 → BBL2 DC





DEMATA AIRINDO, CV.

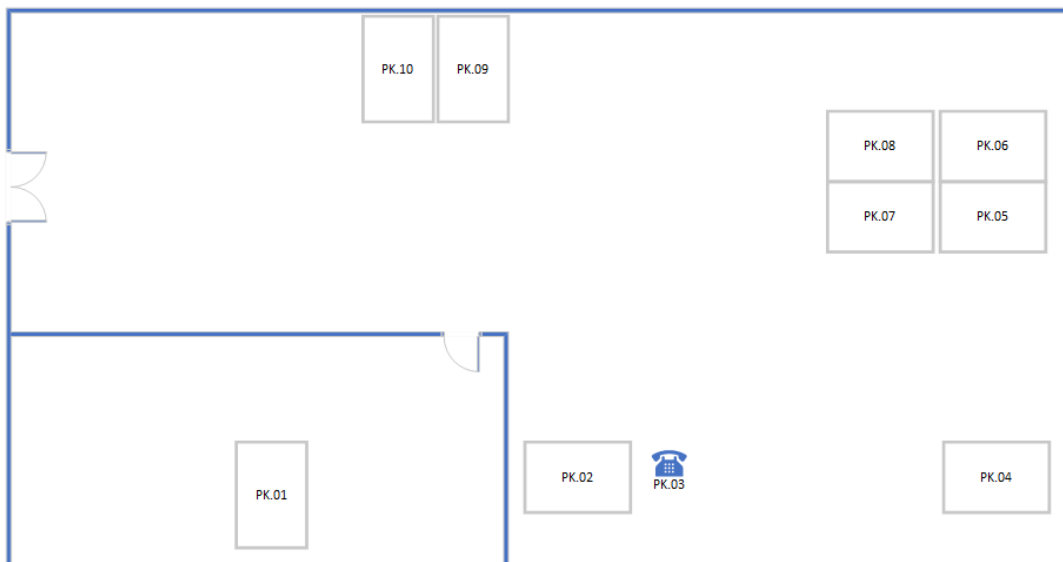
Office : Komplek Buana Soetta Blok G-33
Gedebage – Soekarno Hatta Bandung 40295
Phone : 081321294668 – (022) 87798513
E-mail : demataairindo@gmail.com

- **RUANG PKSP LANTAI 2**



Port Legend :

1 → PK.01	13 → KOSONG
2 → PK.02	14 → KOSONG
3 → PK.03	15 → KOSONG
4 → PK.04	16 → KOSONG
5 → PK.05	17 → KOSONG
6 → PK.06	18 → KOSONG
7 → PK.07	19 → KOSONG
8 → PK.08	20 → KOSONG
9 → PK.09	21 → KOSONG
10 → PK.10	22 → KOSONG
11 → KOSONG	23 → KOSONG
12 → KOSONG	24 → BBPKSP LT.2





DEMATA AIRINDO, CV.

Office : Komplek Buana Soetta Blok G-33
Gedebage – Soekarno Hatta Bandung 40295
Phone : 081321294668 – (022) 87798513
E-mail : demataairindo@gmail.com

- LANTAI 3**

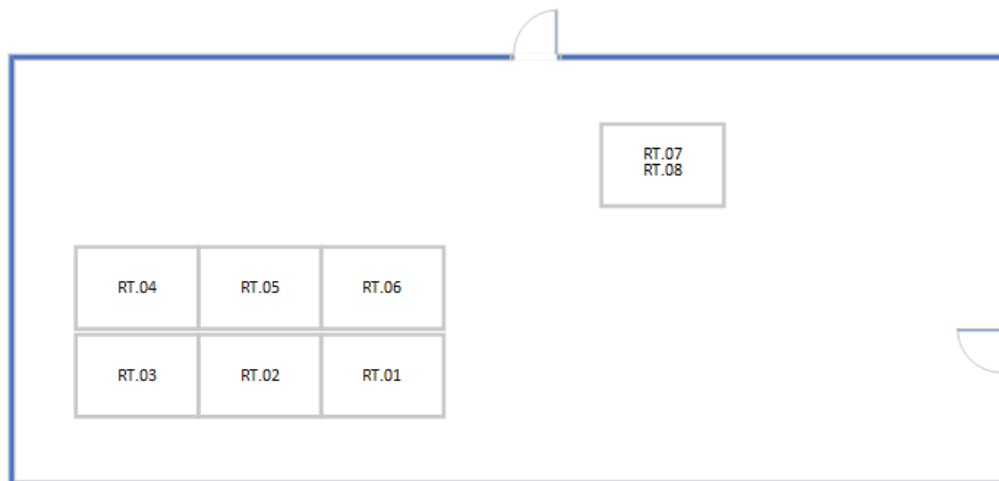


Port Legend Switch 1 :

Port Legend Switch 2 :

Port Legend Switch 3 :

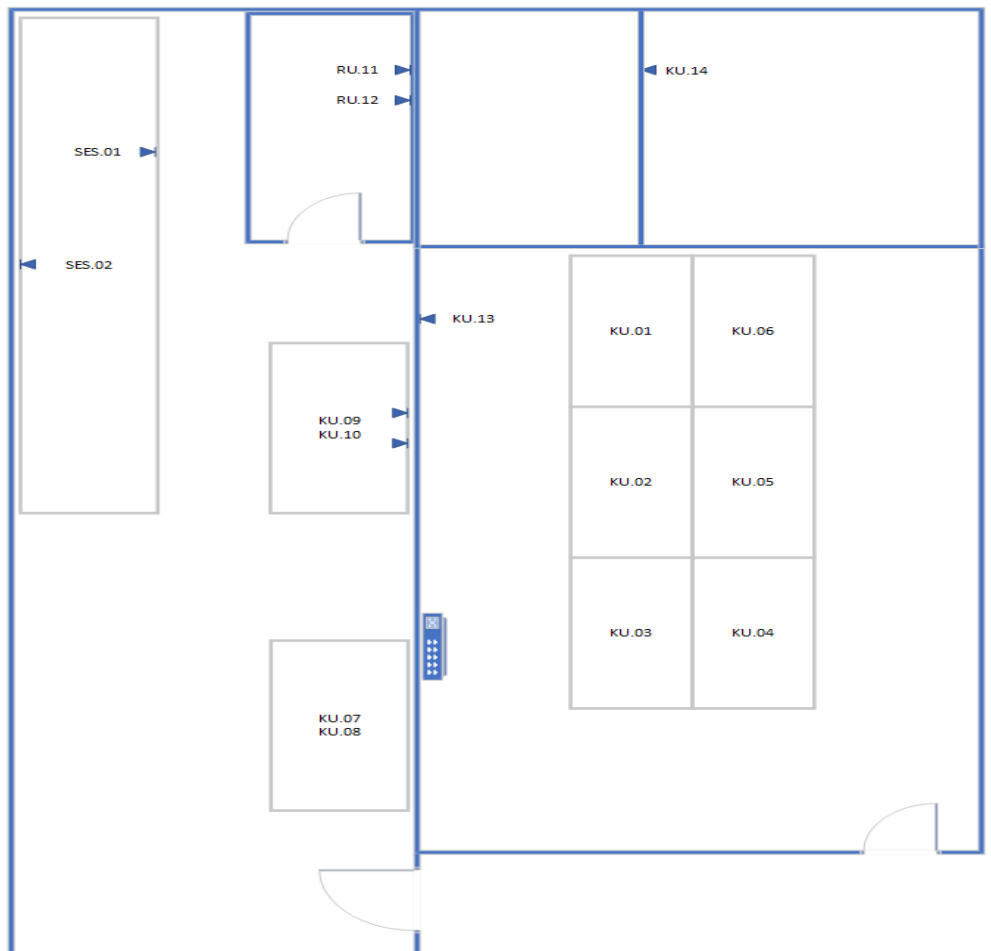
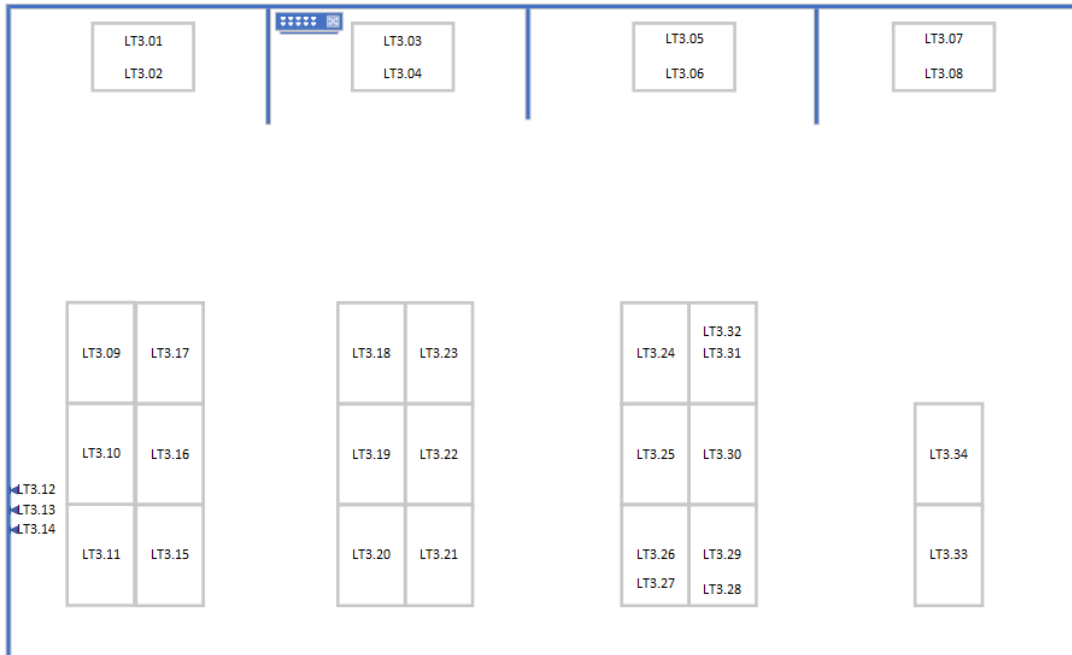
1 → L3.09	13 → L3.21	1 → L3.29	13 → RT.07	1 → SES.01	13 → L3.07
2 → L3.10	14 → L3.22	2 → L3.30	14 → RT.08	2 → SES.02	14 → L3.08
3 → L3.11	15 → L3.23	3 → L3.31	15 → KOSONG	3 → KU.11	15 → KOSONG
4 → L3.12	16 → L3.24	4 → L3.32	16 → KOSONG	4 → KU.12	16 → KOSONG
5 → L3.13	17 → L3.25	5 → L3.33	17 → KOSONG	5 → KU.13	17 → KOSONG
6 → L3.14	18 → L3.26	6 → L3.34	18 → KOSONG	6 → KOSONG	18 → KOSONG
7 → L3.15	19 → L3.27	7 → RT.01	19 → KOSONG	7 → L3.01	19 → KOSONG
8 → L3.16	20 → L3.28	8 → RT.02	20 → KOSONG	8 → L3.02	20 → KOSONG
9 → L3.17	21 → KOSONG	9 → RT.03	21 → KOSONG	9 → L3.03	21 → KOSONG
10 → L3.18	22 → KOSONG	10 → RT.04	22 → KOSONG	10 → L3.04	22 → KU.14
11 → L3.19	23 → KOSONG	11 → RT.05	23 → KOSONG	11 → L3.05	23 → BB.KU
12 → L3.20	24 → BB.L3.1	12 → RT.06	24 → BB.L3.2	12 → L3.06	24 → BB.L3.3





DEMATA AIRINDO, CV.

Office : Komplek Buana Soetta Blok G-33
Gedebage – Soekarno Hatta Bandung 40295
Phone : 081321294668 – (022) 87798513
E-mail : demataairindo@gmail.com





DEMATA AIRINDO, CV.

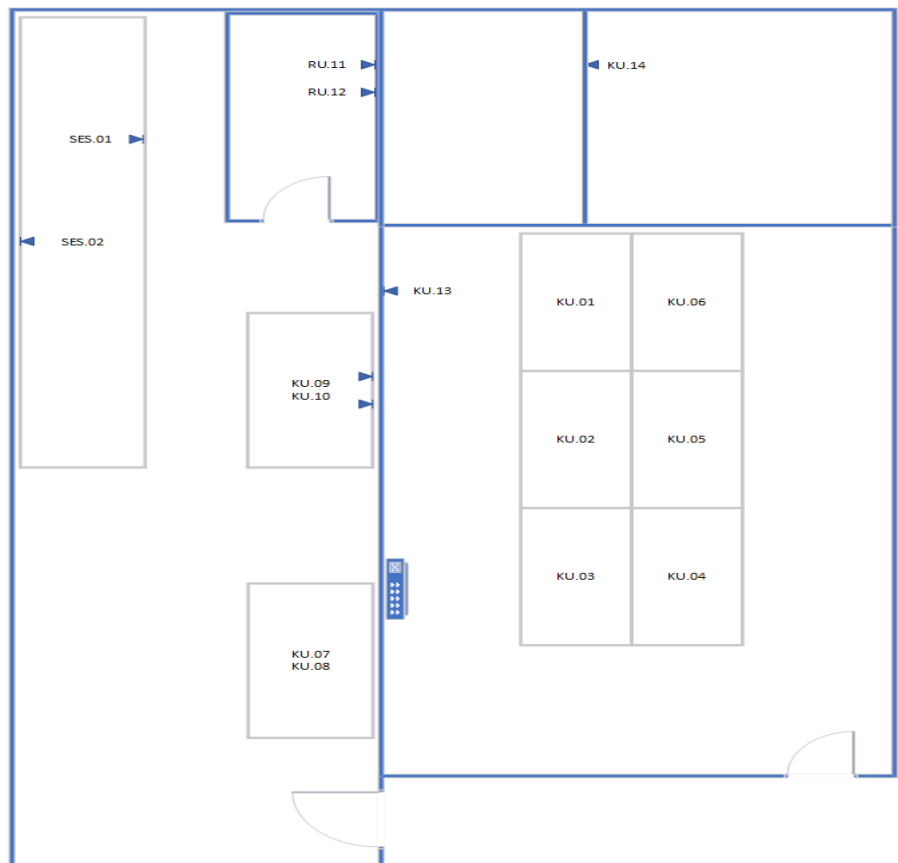
Office : Komplek Buana Soetta Blok G-33
Gedebage – Soekarno Hatta Bandung 40295
Phone : 081321294668 – (022) 87798513
E-mail : dematairindo@gmail.com

- **RUANG KEUANGAN LANTAI 3**



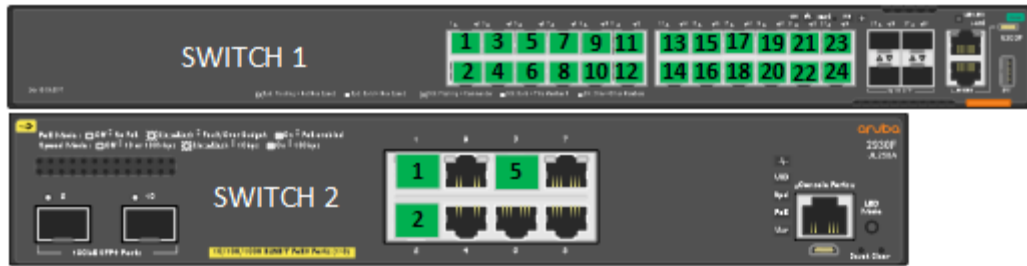
Port Legend :

1 → KU.01	13 → KOSONG
2 → KU.02	14 → KOSONG
3 → KU.03	15 → KOSONG
4 → KU.04	16 → KOSONG
5 → KU.05	17 → KOSONG
6 → KU.06	18 → KOSONG
7 → KU.07	19 → KOSONG
8 → KU.08	20 → KOSONG
9 → KU.09	21 → KOSONG
10 → KU.10	22 → KOSONG
11 → SES.01	23 → KOSONG
12 → SES.02	24 → BB.KU.LT.3





- RUANG VISUAL DATA LANTAI 3**

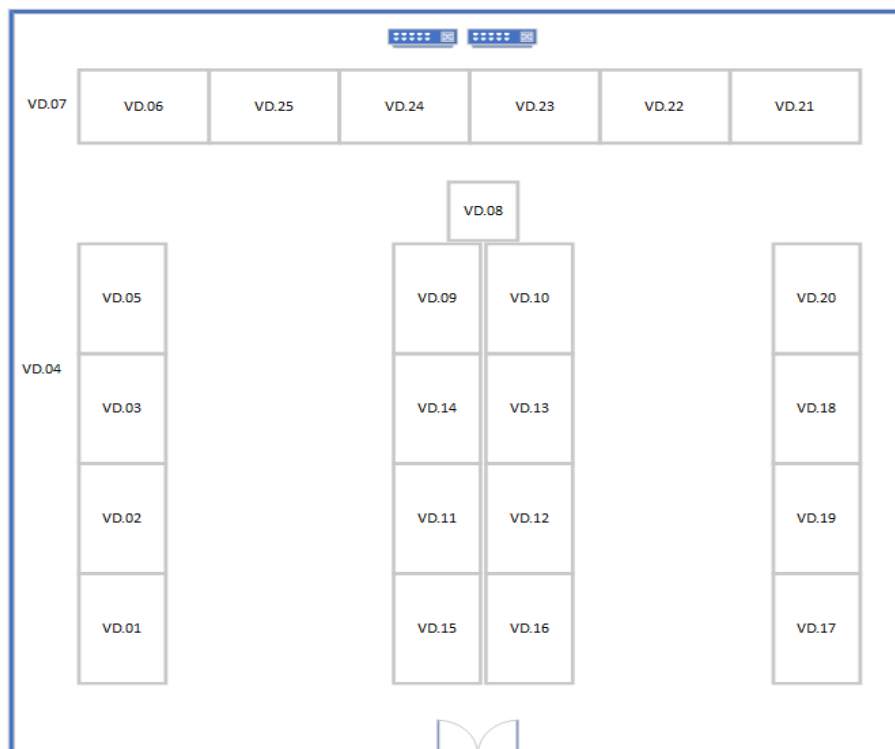


Port Legend Switch 1 :

1 → VD.01	13 → VD.13
2 → VD.02	14 → VD.14
3 → VD.03	15 → VD.15
4 → VD.04	16 → VD.16
5 → VD.05	17 → VD.17
6 → VD.06	18 → VD.18
7 → VD.07	19 → VD.19
8 → VD.08	20 → VD.20
9 → VD.09	21 → VD.21
10 → VD.10	22 → VD.22
11 → VD.11	23 → VD.23
12 → VD.12	24 → BBVD1

Port Legend Switch 2 :

1 → VD.24
2 → VD.25
3 → KOSONG
4 → KOSONG
5 → BBVD2
6 → KOSONG
7 → KOSONG
8 → KOSONG





DEMATA AIRINDO, CV.

Office : Komplek Buana Soetta Blok G-33
Gedebage – Soekarno Hatta Bandung 40295
Phone : 081321294668 – (022) 87798513
E-mail : dematairindo@gmail.com

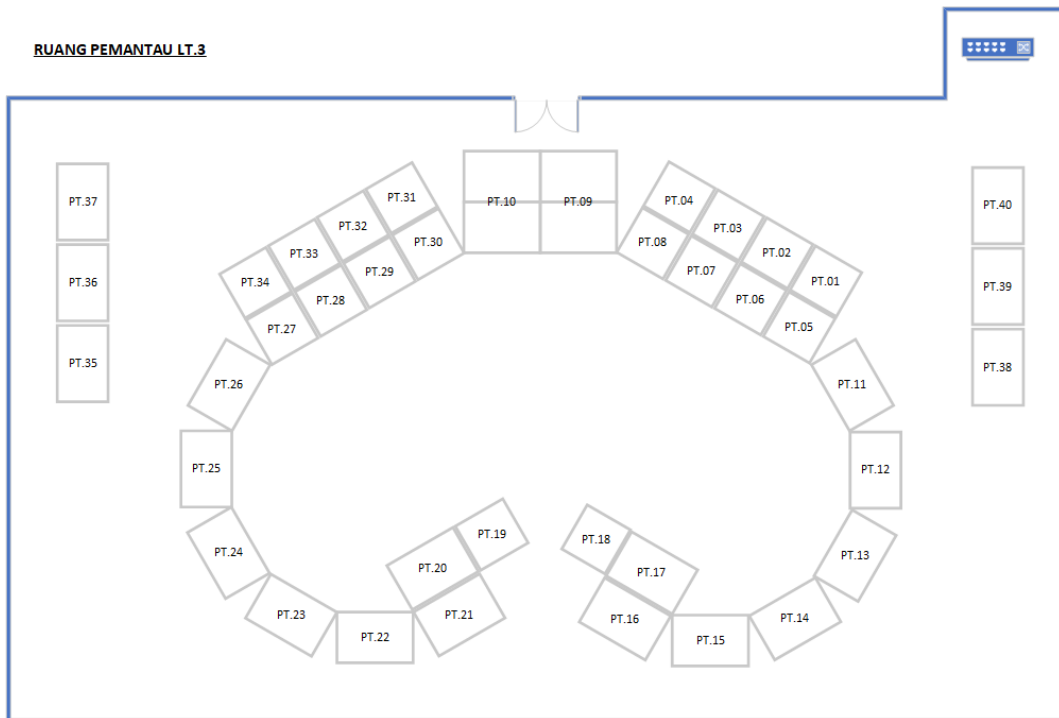
- **RUANG PEMANTAU LANTAI 3**



Port Legend :

1 → PT.01	13 → PT.13	25 → PT.25	37 → PT.37
2 → PT.02	14 → PT.14	26 → PT.26	38 → PT.38
3 → PT.03	15 → PT.15	27 → PT.27	39 → PT.39
4 → PT.04	16 → PT.16	28 → PT.28	40 → PT.40
5 → PT.05	17 → PT.17	29 → PT.29	41 → PT.41
6 → PT.06	18 → PT.18	30 → PT.30	42 → PT.42
7 → PT.07	19 → PT.19	31 → PT.31	43 → PT.43
8 → PT.08	20 → PT.20	32 → PT.32	44 → PT.44
9 → PT.09	21 → PT.21	33 → PT.33	45 → PT.45
10 → PT.10	22 → PT.22	34 → PT.34	46 → PT.46
11 → PT.11	23 → PT.23	35 → PT.35	47 → PT.47
12 → PT.12	24 → PT.24	36 → PT.36	48 → PT.48

RUANG PEMANTAU LT.3





DEMATA AIRINDO, CV.

Office : Komplek Buana Soetta Blok G-33
Gedebage – Soekarno Hatta Bandung 40295
Phone : 081321294668 – (022) 87798513
E-mail : dematairindo@gmail.com

9. REKOMENDASI

Pekerjaan ini telah selesai dengan hasil yang sesuai harapan. Infrastruktur jaringan KPI kini lebih tertib, aman, dan siap mendukung kebutuhan teknologi informasi ke depan. Disarankan agar KPI membuat SOP pengelolaan jaringan dan audit berkala untuk menjaga kualitas infrastruktur. Semoga laporan ini bermanfaat dan menjadi dasar perbaikan sistem TI KPI di masa mendatang.

Bandung, 11 April 2025

Pelaksana,

CV. Demata Airindo

Dian Mega Purnamawati

Mengetahui,

KPI Pusat

Samdean Anggieta



DEMATA AIRINDO, CV.

Office : Komplek Buana Soetta Blok G-33
Gedebage – Soekarno Hatta Bandung 40295
Phone : 081321294668 – (022) 87798513
E-mail : demataairindo@gmail.com

1. HDD S/N : LDA0007PH3PR4G – DES 2016

P/N : 0F27441 MLC : LHA2B1





DEMATA AIRINDO, CV.

Office : Komplek Buana Soetta Blok G-33
Gedebage – Soekarno Hatta Bandung 40295
Phone : 081321294668 – (022) 87798513
E-mail : demataairindo@gmail.com

2. HDD S/N : LMA0002YJSNWMD – NOV 2018

P/N : 0F27441

MLC : LHA2B1





DEMATA AIRINDO, CV.

Office : Komplek Buana Soetta Blok G-33
Gedebage – Soekarno Hatta Bandung 40295
Phone : 081321294668 – (022) 87798513
E-mail : demataairindo@gmail.com

3. HDD S/N : LDA0007PH7UX6G – DES 2016

P/N : 0F27441

MLC : LHA2B1





DEMATA AIRINDO, CV.

Office : Komplek Buana Soetta Blok G-33
Gedebage – Soekarno Hatta Bandung 40295
Phone : 081321294668 – (022) 87798513
E-mail : demataairindo@gmail.com

4. HDD S/N : LDA0007PH6PR9G – DES 2016

P/N : 0F27441 MLC : LHA2B1





DEMATA AIRINDO, CV.

Office : Komplek Buana Soetta Blok G-33
Gedebage – Soekarno Hatta Bandung 40295
Phone : 081321294668 – (022) 87798513
E-mail : demataairindo@gmail.com

HDD SEBELUMNYA KONDISI RUSAK





DEMATA AIRINDO, CV.

Office : Komplek Buana Soetta Blok G-33
Cedebage – Soekarno Hatta Bandung 40295
Phone : 081321294668 – (022) 87798513
E-mail : dematairindo@gmail.com

KABEL UTP





DEMATA AIRINDO, CV.

Office : Komplek Buana Soetta Blok G-33
Gedebage – Soekarno Hatta Bandung 40295
Phone : 081321294668 – (022) 87798513
E-mail : demataairindo@gmail.com



TEST COMM - PEMETAAN JARINGAN LAN KPI PUSAT

I. Informasi Umum

Tanggal	10 April 2025
Tim Pelaksana	CV Demata Airindo TIK KPI Pusat Tim Rumah Tangga
Lokasi	Gedung KPI Pusat
Dokumentator	TIK KPI Pusat

II. Hasil Perbaikan dan Labeling Kabel UTP

No	ID Kabel	Lokasi	Tindakan Perbaikan	Label Baru	Catatan
1	PT	Ruang Pemantau Lantai 3	Perapihan kabel, crimping ulang konektor RJ45, test koneksi dengan alat tester, pembersihan debu di rack.	PT.01-PT.48	Sesuai
2	VD	Ruang Visual Data	Perapihan kabel, crimping ulang konektor RJ45, test koneksi dengan alat tester, pemasangan switch ke wall	VD.01-VD.025	Sesuai
3	RT	Rumah Tangga	Perapihan kabel, crimping ulang konektor RJ45, test koneksi dengan alat tester	RT.01-RT08	Sesuai
4	L3	Lantai 3	Perapihan kabel, crimping ulang konektor RJ45, test koneksi dengan alat tester, pemasangan wire management.	L3.01-L3.34	Sesuai
5	KU	Keuangan	Perapihan kabel, crimping ulang konektor RJ45, test koneksi dengan alat tester, pemasangan switch ke wall.	KU.01-KU.10,	Sesuai

6	Ses	Sekretaris KPI Pusat	Perapihan kabel, crimping ulang konektor RJ45, test koneksi dengan alat tester	SES.01-SES.02	Sesuai
7	RA	Ruang Asisten Lantai 2	Perapihan kabel, crimping ulang konektor RJ45, test koneksi dengan alat tester	RA.01-RA.022	Sesuai
8	R21-R29	Ruang Komisioner R201-R209	Perapihan kabel, crimping ulang konektor RJ45, test koneksi dengan alat tester	R21.01, R22.01, R23.01-R23.02, R24.01-R24.02, R25.01-R25.02, R26.01-R26.02, R27.01-R27.02, R28.01, R29.01-R29.02	Sesuai
9	LT	Ruang Litbang	Perapihan kabel, crimping ulang konektor RJ45, test koneksi dengan alat tester	LT.01-LT.05	Sesuai
10	PKSP	Ruang PKSP	Perapihan kabel, crimping ulang konektor RJ45, test koneksi dengan alat tester, pemasangan switch ke wall.	PK.01-PK.10	Sesuai
11	RP	Rupatama	Perapihan kabel, crimping ulang konektor RJ45, test koneksi dengan alat tester	RP.01	Sesuai
12	HU	Humas	Penarikan kabel baru, crimping konektor Rj45, pemasangan wire management, perapihan wallmount rack, test koneksi dengan alat tester	HU.01-HU.16, RE.01-RE.02, PE.01-PE.02	Sesuai

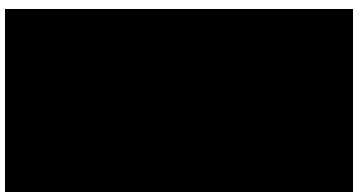
V. Visualisasi dan Dokumentasi Topologi

Diagram	Deskripsi	Visualisasi
<p>1. Topology sebelum perapihan</p>	<p>Setiap lantai terdistribusi ke 1 switch core, dimana akan mempengaruhi kinerja unit tersebut, dan juga akan mempengaruhi komunikasi data baik intranet maupun internet. Dimana user biasanya akan mengalami lag dan delay dalam mengambil data ke server, atau buffering ketika stream video secara online (diluar kapasitas bandwidth)</p>	
<p>2. Topology sesudah perapihan</p>	<p>Setiap lantai terdistribusi ke beberapa switch dore, sehingga pendistribusian IP maupun komunikasi data baik secara intranet maupun internet bisa lebih cepat dan stabil. Secara management network maupun handling/analisa masalah bisa lebih cepat dan juga terstruktur</p>	

VI. Laporan Evaluasi dan Rekomendasi

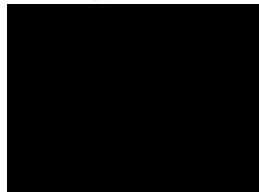
Aspek	Hasil Evaluasi	Rekomendasi
<p>Saat ini, jaringan LAN di gedung KPI pusat mengalami berbagai kendala seperti kecepatan akses yang tidak optimal, jaringan yang tidak stabil, serta infrastruktur yang memerlukan pembaruan. Masalah ini dapat berdampak pada terganggunya komunikasi dan akses data yang diperlukan dalam operasional harian. Selain itu, perkembangan teknologi yang pesat juga menuntut peningkatan sistem jaringan agar dapat mengakomodasi kebutuhan kerja yang semakin kompleks dan berbasis digital</p>	<p>- Dalam seiring berjalannya waktu, kabel UTP/LAN yang ada di jaringan intranet biasanya akan kembali menjadi berantakan dan labelnya berubah (tidak sesuai dengan port), akibatnya permasalahan yang sama akan berulang kembali, dimana koneksi internet akan terasa lambat dan koneksi intranet akan terasa berat dan delay.</p> <p>Beberapa kabel masih menggunakan label sementara</p>	<p>Adanya maintenance per tahun untuk perapihan jaringan LAN agar selalu dalam keadaan yang prima dan optimal dalam kinerja interkoneksi data baik intranet maupun internet. Adanya analisa terhadap kinerja unit/device jaringan terlebih untuk unit memang sudah tergolong teknologi lama dan tidak update.</p> <p>Finishing Label Kabel</p>

Mengetahui,
KPI PUSAT (Div. TIK)



Samdea Anggieta

Mengetahui,
KPI PUSAT (PPK)



Nofiardi Syarif

Pelaksana,
CV. Demata Airindo



Dian Mega Purnamawati